

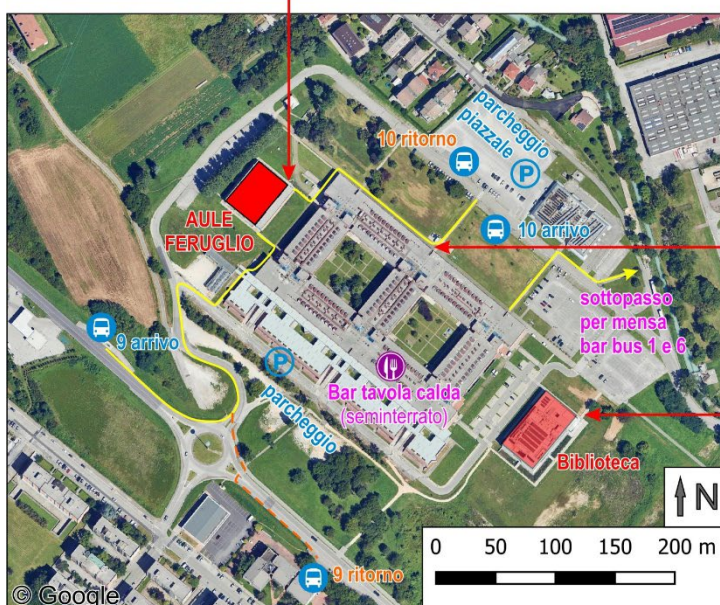
NGGTS 2026 UDINE – USEFUL INFORMATION

NGGTS 2026 will take place in the Feruglio “G4” Rooms of the “Rizzi” Science Campus, University of Udine, Via delle Scienze 212, Udine.

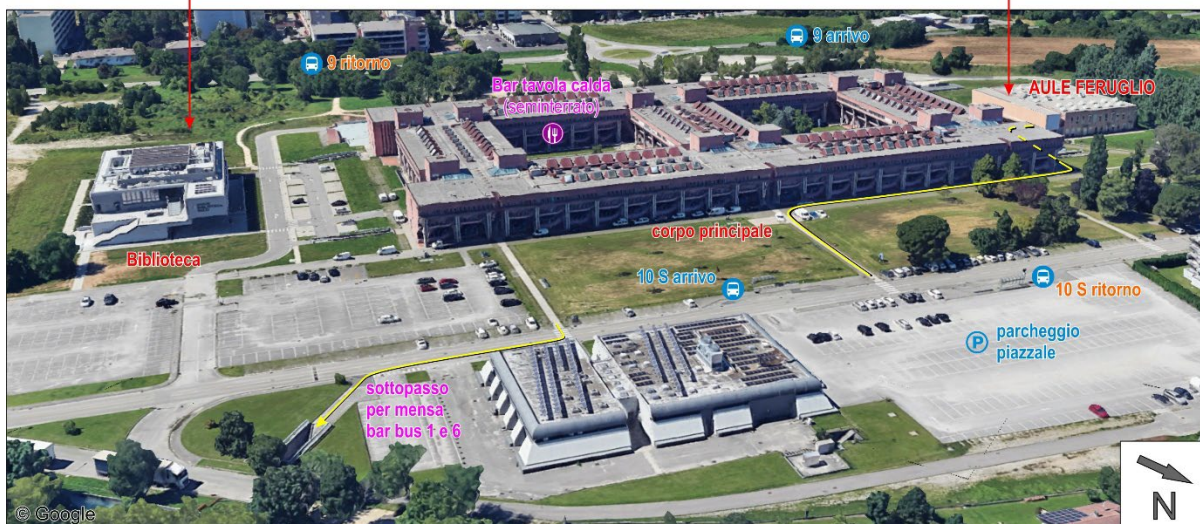


link Google Maps

<https://www.google.com/maps/d/embed?mid=1Cy6Vw5fNlNilqIPhPCW-Y2SVfEcr3b8&ehbc=2E312F&noprof=1>



Reception and registration will take place in the Feruglio Rooms (building with yellow sign “G4”) – room Alfa 3, ground floor, at the end on the left.



Arriving by car

Free parking is recommended in the main square, in the spaces along Via delle Scienze in front of the main entrance of the “Rizzi” Science Campus, or in the rear area (downhill street Via Fausto Schiavi).

Urban Bus Connections

Google Maps is updated with bus schedules. Lines 6, 10, S stop on the opposite side of the railway station, near the TPL ticket office. Lines 1 and 9 depart from the station side.

<https://maps.app.goo.gl/cU4zaqdLVWBdbtPr7>

Timetables and QR codes are available at bus stops. Single-ride ticket €1.50; day ticket €3.35. Card payments are not available on board.

Info and tickets:

<https://tplfvg.it/it/biglietti/canaliticket/>



Recommended Bus Lines: Only line 1 is very frequent. Recommended lines: 10 Right and S.

Lines 10, 10 bis, S Arrival stop directly in front of the “Rizzi” Science Campus.

<https://maps.app.goo.gl/R8eKyfN2H2TwGLuM9>

NOTE: Line S is faster. Line 10 is circular. “10 Right” is recommended.

Line 9 Stop at “Via Pasolini (Polo Rizzi)”, then 400 m on foot.

<https://maps.app.goo.gl/9P6Fd4qhabwYM1rL6>

Line 6 Stop at “Via Freschi”, then 750 m on foot.

<https://maps.app.goo.gl/ws6U5vPa2125Hcig9>

Line 1 Stop “Via Chiusaforte (park-and-ride)”, 1100 m on foot.

<https://maps.app.goo.gl/2Zv78iqxUfnrS3d87>

Return – Real-Time Info

- **Lines 10 and S:** <https://realtime.tplfvg.it/?stopcode=UD504>
- **Line 9:** <https://realtime.tplfvg.it/?stopcode=70C64>
- **Line 6:** <https://realtime.tplfvg.it/?stopcode=UD264>

- **Line 1:** frequent service



Lines 10 e S



Line 9



Line 6

Lunch

Convivium (bar & cafeteria) Located in the main building, basement level. Hot meals from 12:00 to 14:30. Bar: pay before ordering. Cafeteria: pay after the self-service line.

University Canteen & “Yellow Pecora” Bar 5-minute walk through the underpass, toward the chimney landmark.



